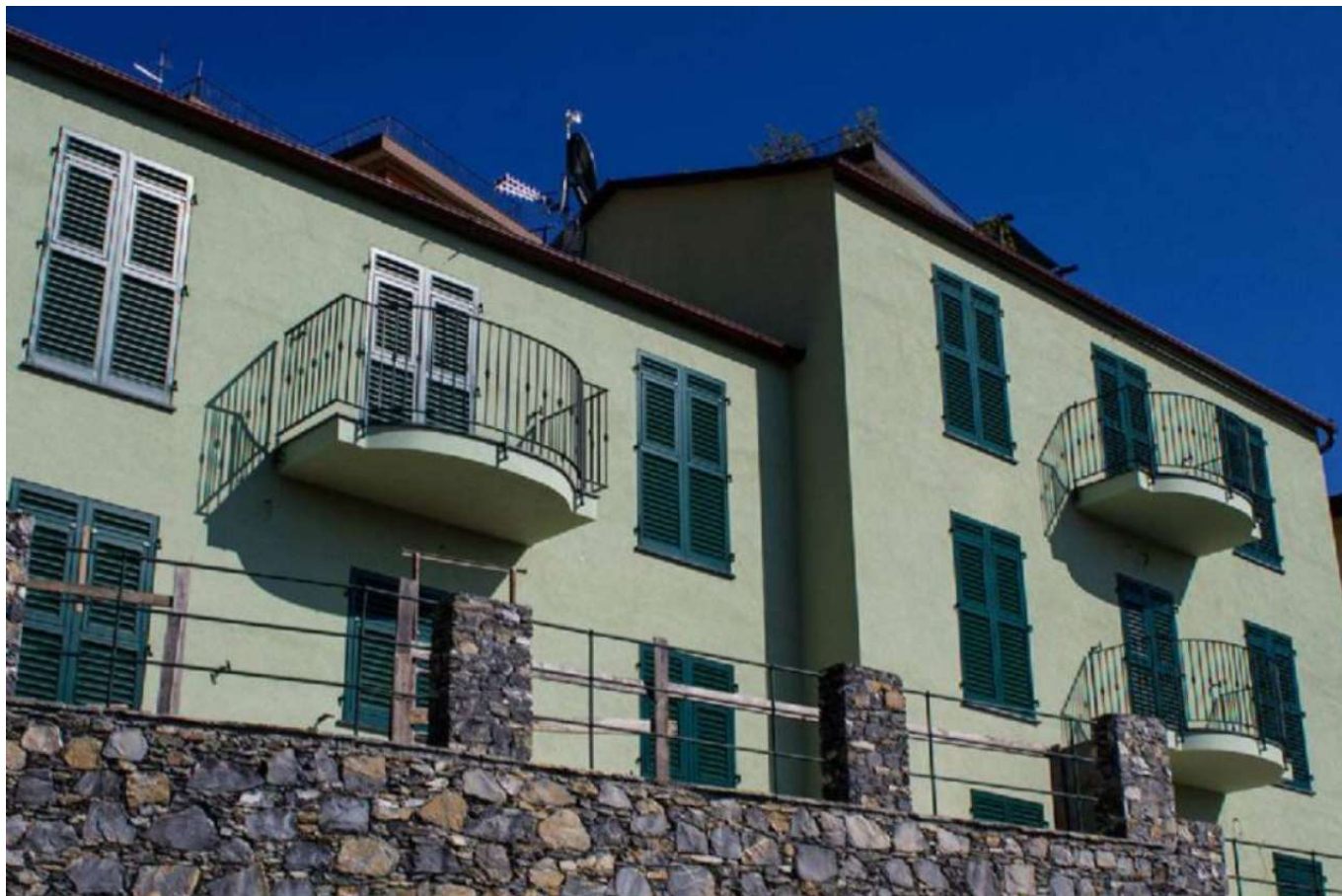


## in Sell to Zoagli Area: 150 Metri Dalla Stazione Ferroviaria



### **420 sm | Bathrooms: 1 | Bedrooms: 10 | Rooms: 15**

Zoagli old town, new building just completed in energy class "A" with enchanting direct views of the Gulf of Tigullio and Portofino a three-minute walk from the train station and the central square of Zoagli with the beach overlooking the sea. The building consists of two adjoining bodies of three and two apartments with large and discreet panoramic terraces. On the basement floor with direct access via elevator, 1 box and 6 parking spaces are available.

Soundproof and insulated textures - 15 cm thick insulation coat.

Inside the tile floors of the company Lea Ceramiche in the living room and in the oak rooms. The interior doors of the company Lualdi Porte Spa model shaved wall. Interior doors with thermal cut aluminum, Schuco mechanism with room glass. Entry doors in aluminum and Visarm anti-breakthrough crystal. Visarm Windows and Doors. Aluminium shutters to Genoa. Mosquito nets on all windows and windows doors. Bathrooms wide with Lea Ceramics sanitary upholstery, chrome grohe, shower box in extra temperate light crystal. Self-heating on the floor. Total summer/winter Daikin conditioning. Centralized TV system both digital and parabola. Independent chimneys. Video phones with electric opening access gates. Elevator to the floor garage with cabin (architectural barriers). In all rooms, TV outlets for both terrestrial digital and parable. Predispositions: Anti-theft alarm system and telephone lines with ADSL in all apartments.

### **Certificates**

**Energy Class:**

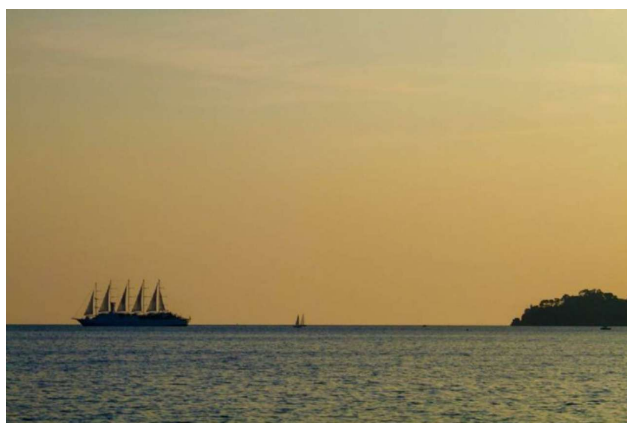
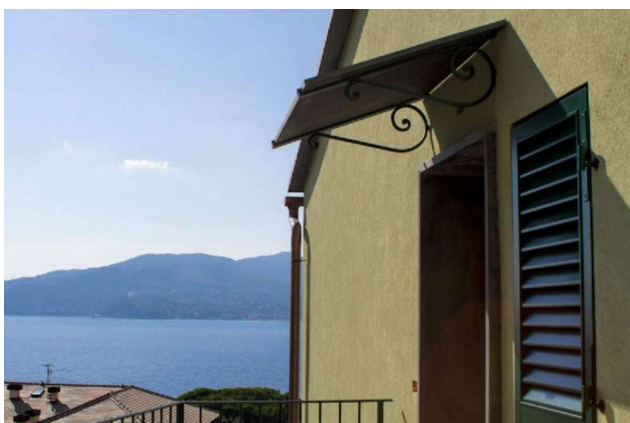
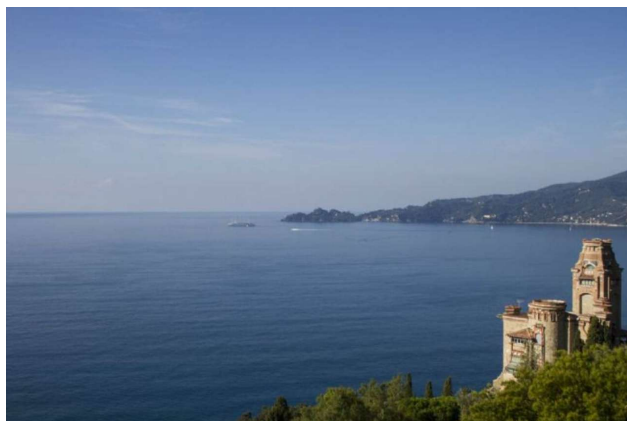
**EPI: 50 kwh/m<sup>2</sup>**

## Property information

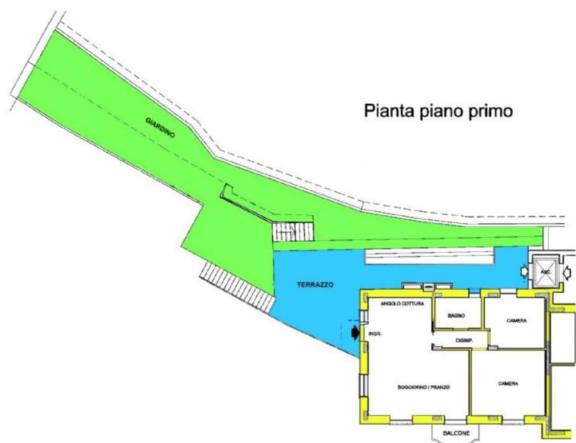
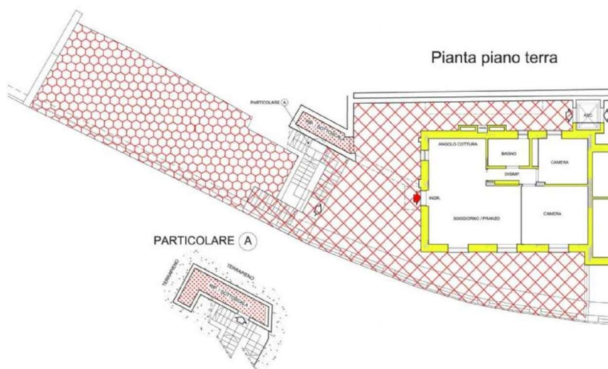
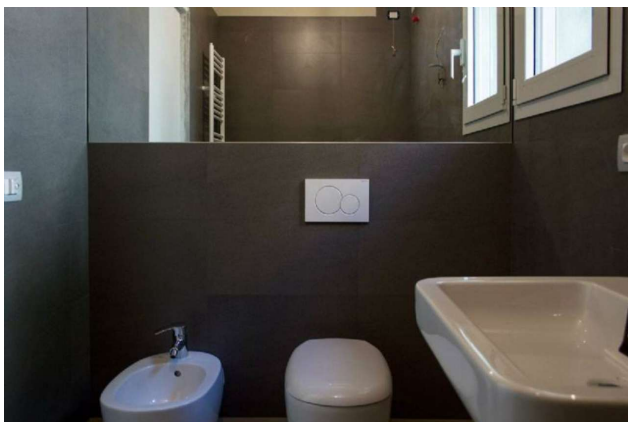
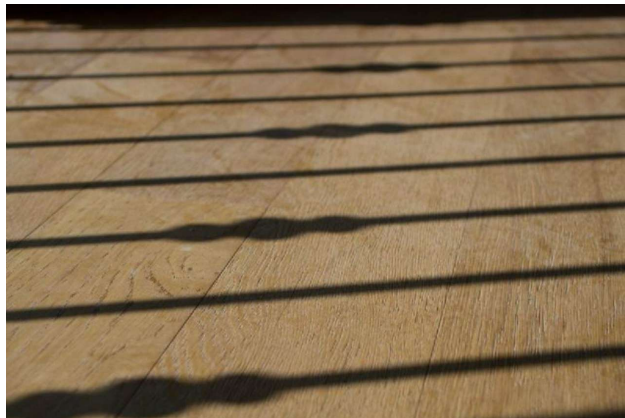
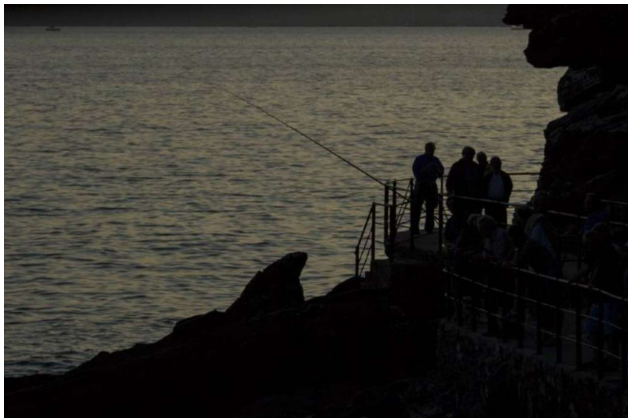
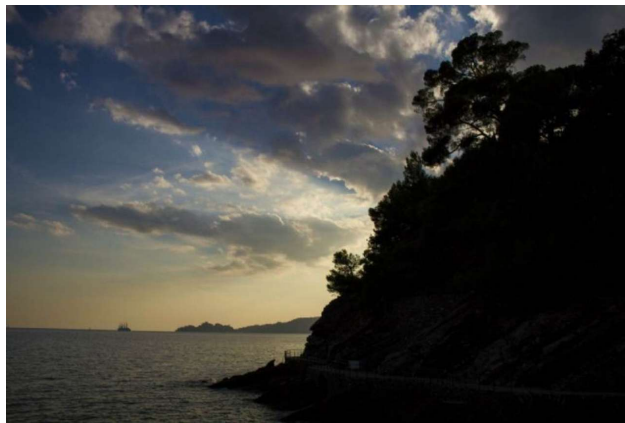
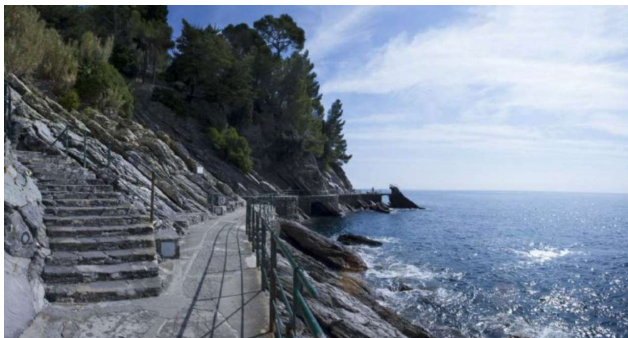
<b>Ref.:</b> H 14415	<b>Reason:</b> Sell
<b>Type:</b>	<b>Region:</b> Liguria
<b>Province:</b> Genova	<b>Municipality:</b> Zoagli
<b>Area:</b> 150 Metri Dalla Stazione Ferroviaria	<b>Price:</b> Private negotiation
<b>Total sq.m.:</b> 420 sm	<b>Bedrooms:</b> 10
<b>Bathrooms:</b> 1	<b>Rooms:</b> 15
<b>Total Floor:</b> 3	<b>Lift:</b> Yes
<b>Age Construction:</b> 2017	<b>Distance from the sea:</b> 100 mt
<b>Garage:</b> Single	

## Nearby

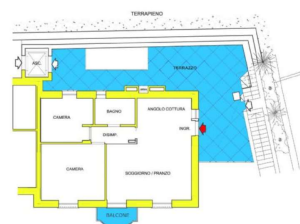
Spa	Fitness Centers	Tennis Courts	Playgrounds
Railway Station	Public Transport	Cafe	Shopping Centers



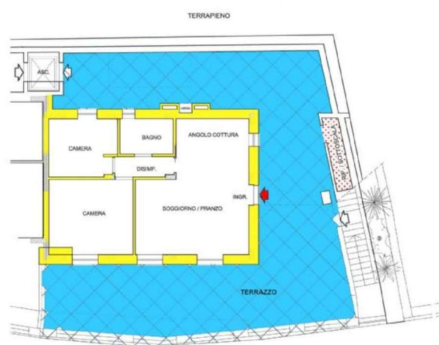




Pianta piano primo



Pianta piano terra



Pianta piano secondo

