

Shed in Rent to Rivoli



24.000 sm

Located within the Orbassano interport, it is situated in a strategic position for national and international connections adjacent to the entrance of the ring road and motorway to Milan/Piacenza.

In the industrial area of the interporto, industrial building of approximately 10,449 m2 adjacent to a courtyard area, to be used as parking for heavy vehicles, customer areas, staff and management, for a total surface area of approximately 13,000 m2. possibly expandable up to a surface area of approximately 24,000 m2 with adjacent additional warehouse of another 12,000 m2 with characteristics partly similar and partly different to diversify needs.

The entire building, recently constructed, was built in 2013, and was designed respecting all safety parameters, suitable for multiple needs, built with latest generation methodology also aimed at energy saving.

The lot in question has eight loading/unloading ports for heavy vehicles with trailers with a height of 8 m.

There are representative offices, meetings, open spaces, services, areas to be used as outbound call centers - Telemarketing with reception on the ground floor, the total meters are approximately 650 m2

There is an area already set aside for logistics with 17 bays with heights adaptable to medium and large-sized vehicles.

There are 8 floor-level access doors with a height of approximately 7 m for the entry of heavy vehicles with trailers and easy internal maneuvering spaces.

The height of the same measures from ground floor to under beam 12 m with beams prepared for overhead crane

The same also benefits from an internal and an external railway connection, a strategic solution for moving bulky, heavy machinery and/or cars.

Today the Sito interporto logistics hub benefits from optimal services for industrial activities, such as entire video-monitored areas
Excellent strategic hub equipped with customs with offices for import/export practices, warehouse and special customs enclosure.

Connection to the city guaranteed by public transport, bank, ATM service and currency exchange.

Food court, bar, restaurant, self-service, tobacconist, minimarket, newsagent, hotel and motel.

Fuel stations, minimarket for accessories and spare parts.

Workshop equipped for repairs on light and heavy vehicles.

Certified center for washing vehicles and decontamination of tanks and containers.

Information and data transmission service.

Emergency room at the adjacent hospital.

Conference facilities of various sizes and types, equipped with the most modern technological, IT and audiovisual supports.

This announcement does not constitute a contractual element.

Property information

Ref.: NUO A000041

Reason: Rent

Type: Shed

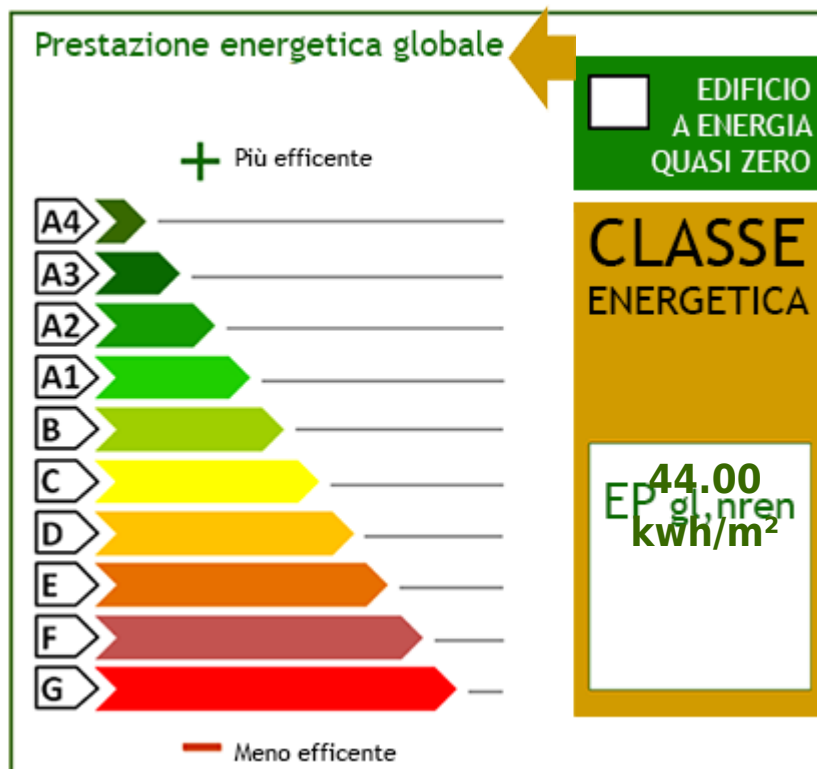
Region: Piemonte

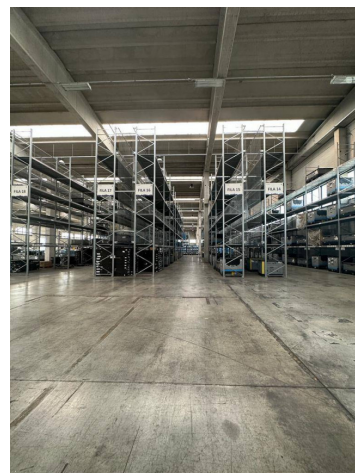
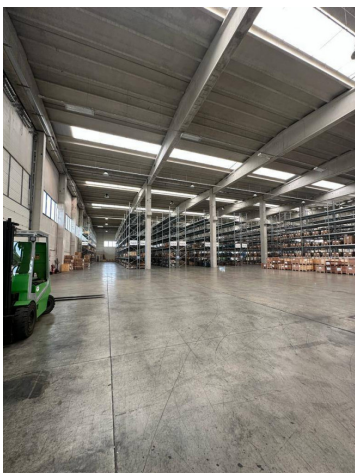
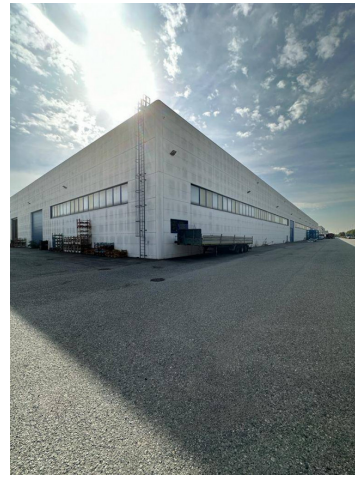
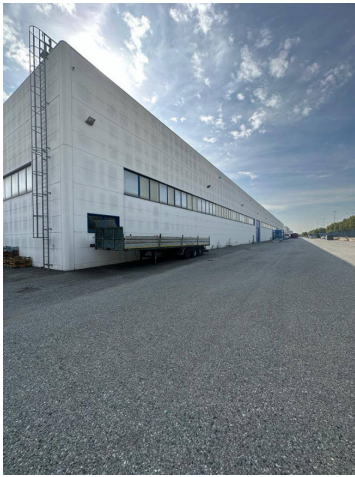
Province: Torino

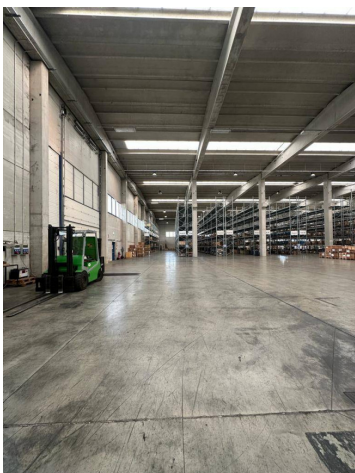
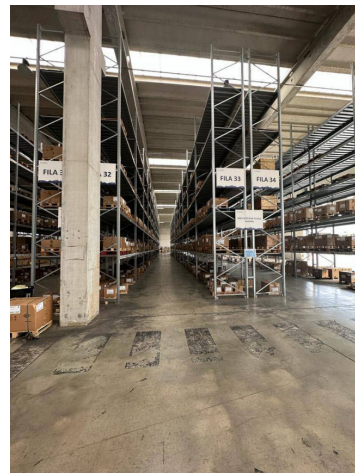
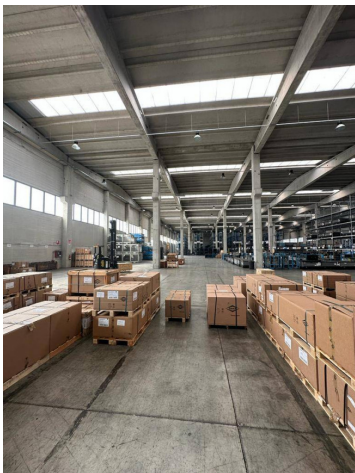
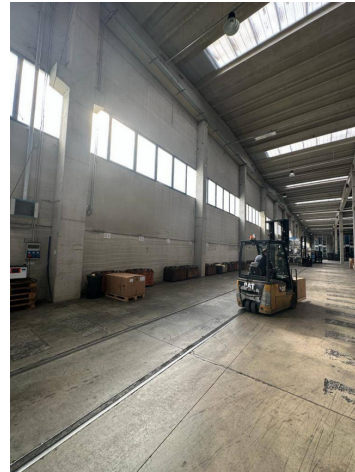
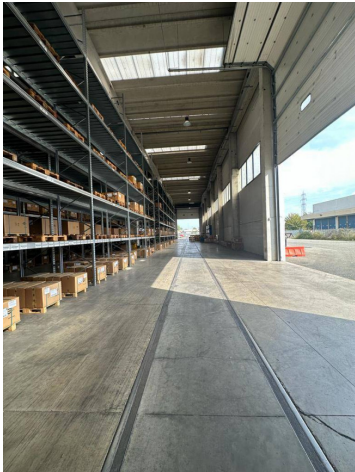
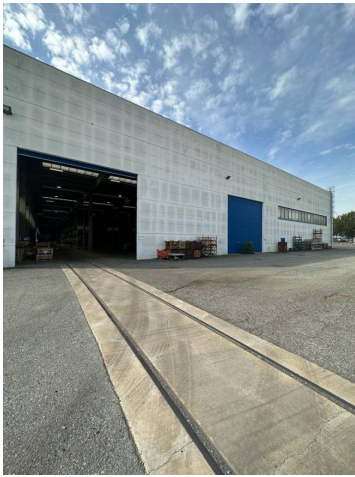
Municipality: Rivoli

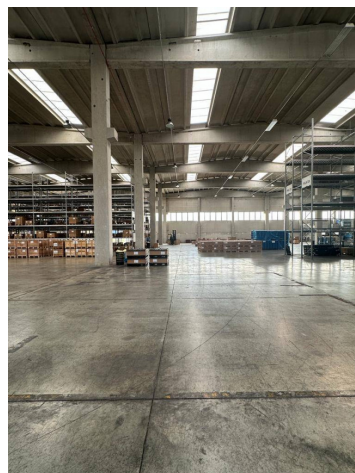
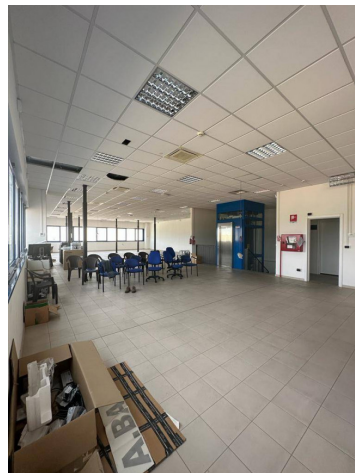
Price: € 50.000

Total sq.m.: 24.000 sm











Fiminter Immobili

Corso Stati Uniti 57 - Torino (TO) - Telephone 0115170021 Fax 011.5170022
 fiminter@fiminter.com - <https://www.fiminter.com>
 Vat number 06292020010