

Shed in Sell to Rivoli Area: Cascine Vica/corso Allamano



15.510 sm

Industrial area of Rivoli (Turin), Cascine Vica district, for sale. Industrial complex with guardhouse and electric gate to access the courtyard.

Warehouse A, free on four sides; 8,200 sq m, recently redone shed roof. Underbeam height 7.55 m; maximum height approximately 10.00 m. In good condition, heated and with a new automated lighting system. The load-bearing pillars are made of slender, space-saving iron beams. The flooring is excellent. A side corridor is used for the passage and/or covered unloading of heavy vehicles. A small office area is also available. RENTED

The rectangular office building comprises a ground floor, a first floor, and a second floor, divided into 26 rooms and 6 bathrooms, for a total floor area of 810 sq m (270 sq m per floor). It is in excellent condition. It features a certified electrical system, independent heating, air conditioning, and data network, floating floors, new windows, a kitchen, and a medical room. The property also includes 10 uncovered parking spaces. RENTED

Warehouse B consists of two connected areas with different sizes - the first is approximately 2,400 square meters (height under beam 7.80 meters) with an asbestos shed roof - the second is approximately 4,000 square meters (height under beam 4.95 meters) with a barrel roof. It was originally a workshop for the production of raw products (the machinery is still present today). Construction carried out in the 1960s. FREE

Property information

Ref.: H 115839

Reason: Sell

Type: Shed

Region: Piemonte

Province: Torino

Municipality: Rivoli

Area: Cascine Vica/corso Allamano

Price: € 3.870.000

Total sq.m.: 15.510 sm

Characteristics

Shelves Crane

Cab Transformation

Water for industrial use

Purifiers

Antifire

Air-Conditioned

Outdoor Area

Driveway

Nearby

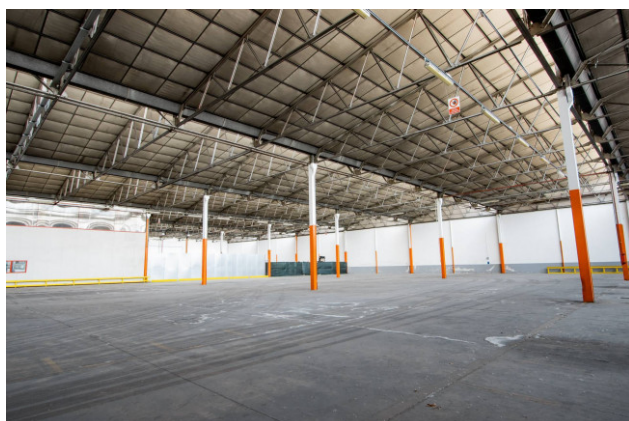
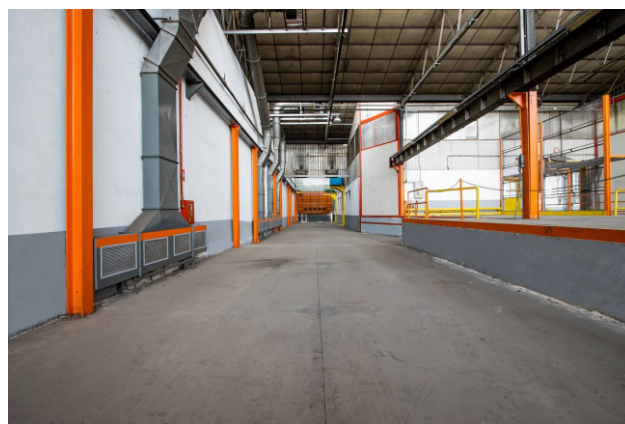
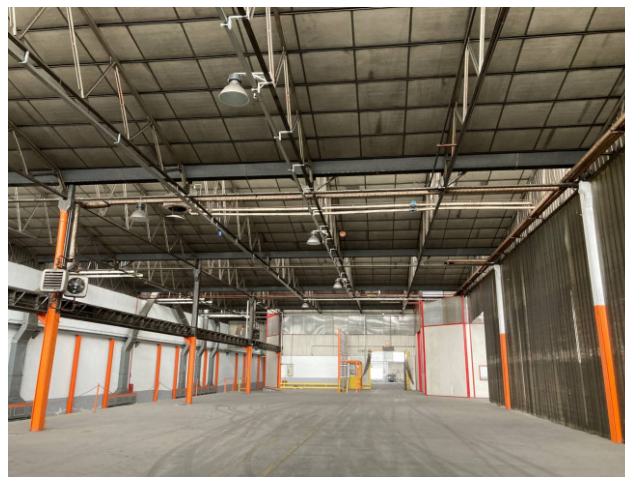
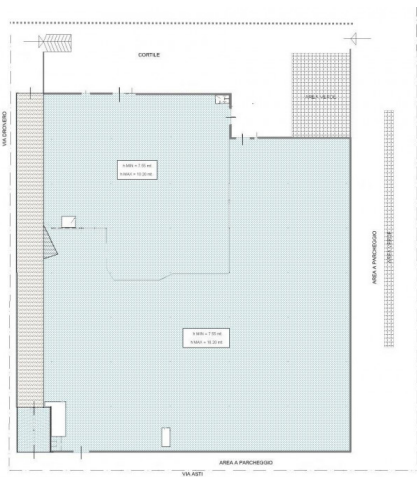
Gyms

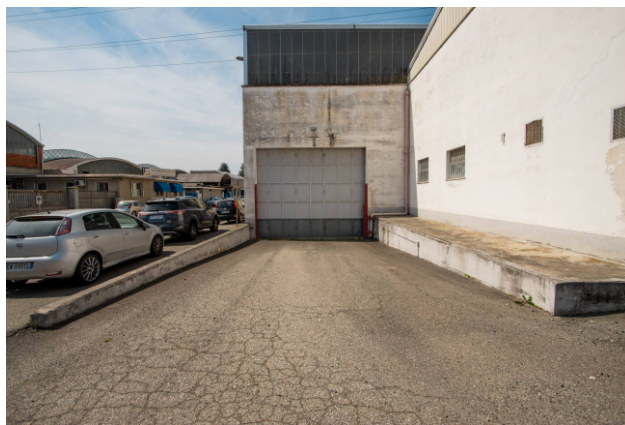
Bike Lanes

Public Transport

Cafe

Shopping Centers



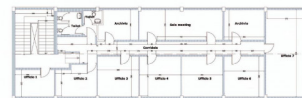


PALAZZINA UFFICI VIA PAVIA 71 RIVOLI



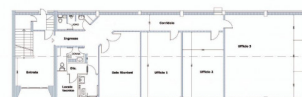
Seconda Piano

SCALA 1:100



Primo Piano

SCALA 1:100



Piano Terreno

SCALA 1:100

